

The background image shows the rear of a white pickup truck parked in a dry, sandy desert environment. The truck bed is filled with animal skins, including a large brown one and a lighter-colored one. A blue bag is also visible. To the right, the front of a dark green pickup truck is partially visible, with '2500 HD' printed on its side. The text 'Trapping in Wyoming' is overlaid in large black font across the center of the image.

Trapping in Wyoming

A Summary of Recent Public Engagement and
Recommendations For the Future

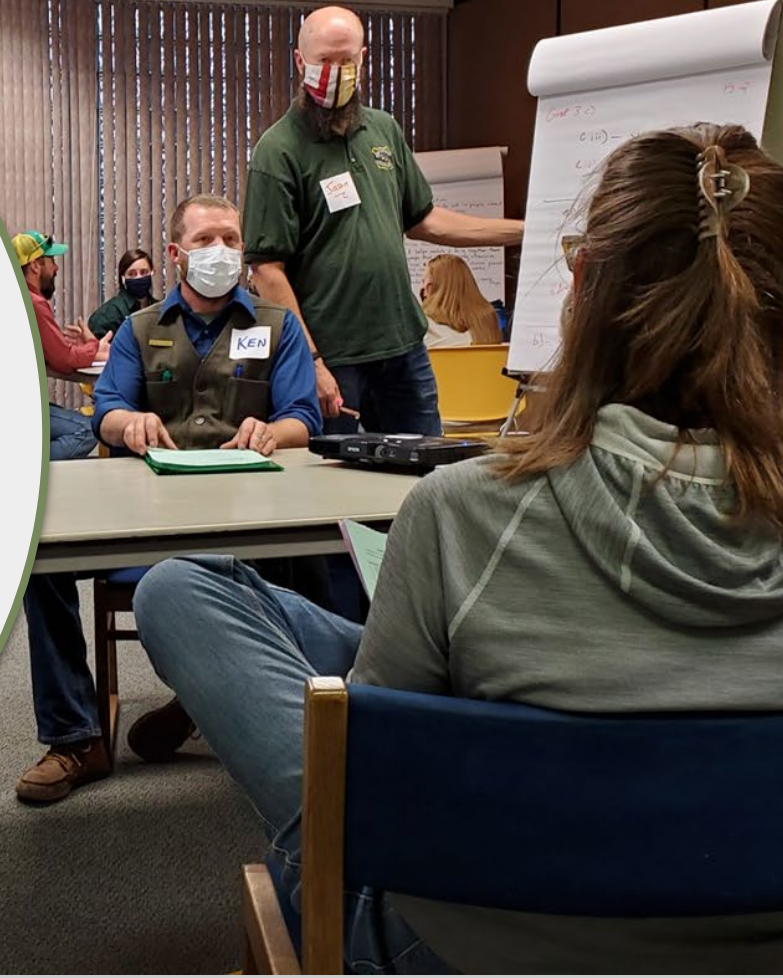
Wyoming Game and Fish Commission
November 2020

Background

- In response to petitions and discussions during the April 2020 Commission meeting the Department was directed to gather more information on trapping.
- Department Committee formed to develop and implement a deliberate and information-based process to inform the Commission.
 - Research
 - Stakeholder contacts
 - Initial findings presented at the July 2020 meeting
- Information gathered was used to develop a list of discussion topics for collaborative meetings held around the state and online.

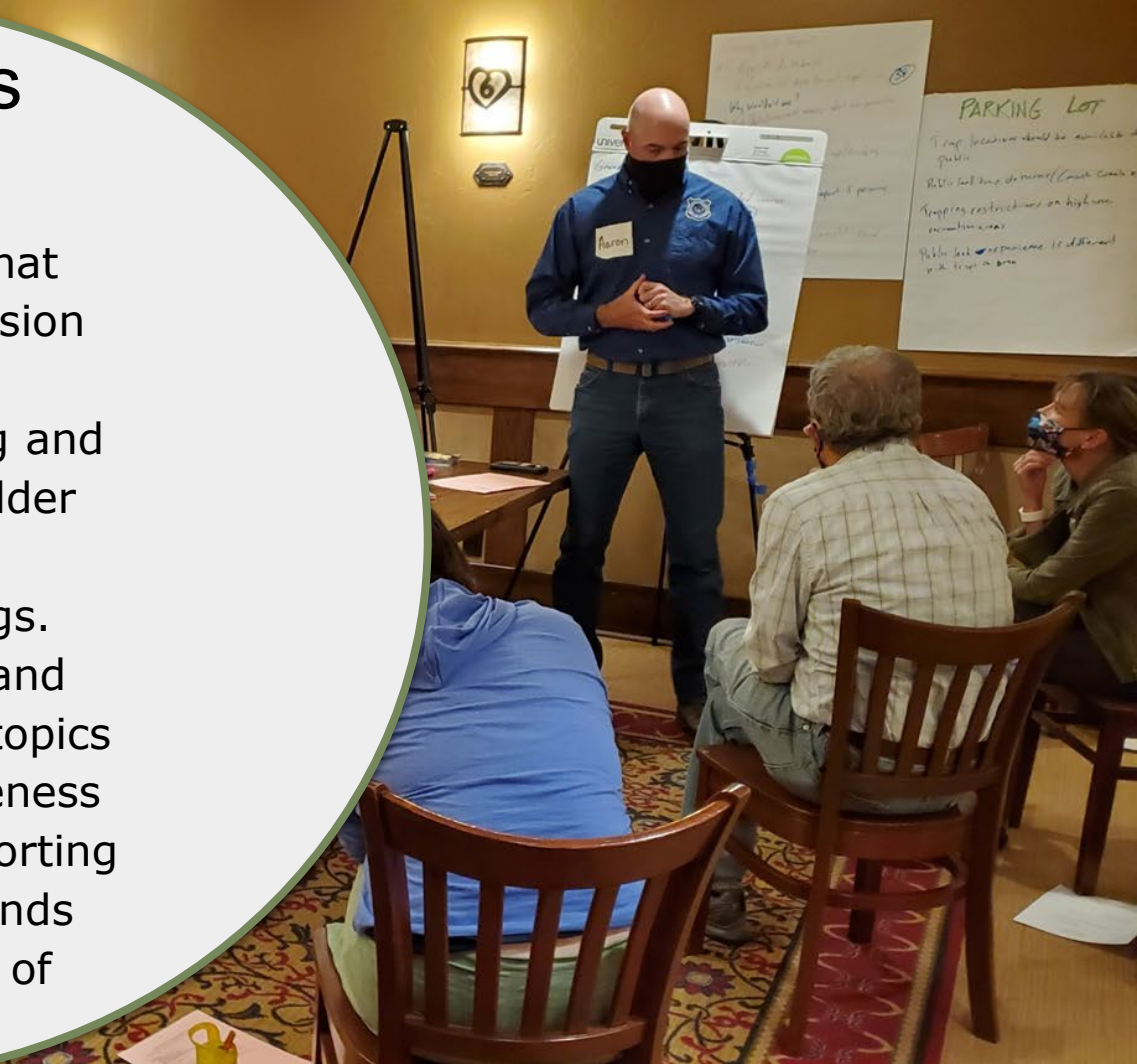
Collaborative Meetings

- In-person meetings were held in early September-186 total public participants. 22 WGFD employees assisted.
 - Rock Springs - 11
 - Jackson - 22
 - Sheridan - 24
 - Laramie - 14 in-person and 37 virtually
 - Lander - 31 in-person and 47 virtually
 - Participants included legislators, WGF Commissioners, trappers, non-trappers, general public, public land users, hunters, livestock producers, ADMB, and Wildlife Services.



Collaborative Meetings

- Meeting format
 - Presentation similar to what was given to the Commission in July 2020.
 - Trapping in Wyoming and results from stakeholder contacts prior to the collaborative meetings.
 - Small group discussions and feedback for three main topics
 - Education and Awareness
 - Regulations and Reporting
 - Trails and Campgrounds
 - How we gauged the level of support



Feedback from Meetings

- Trapper Education
 - Equal opportunity to access if mandatory with a mix of online, in person and mentorship. Consider rural and working families.
 - AFWA North American Trapper Education Course (online) for now but develop WY specific course(s) as we are able
 - Redesign the Furbearer/Trapping Brochure. Include Best Management Practices information, species ID, trap/snare check periods for better fur quality and awareness of other trail uses.



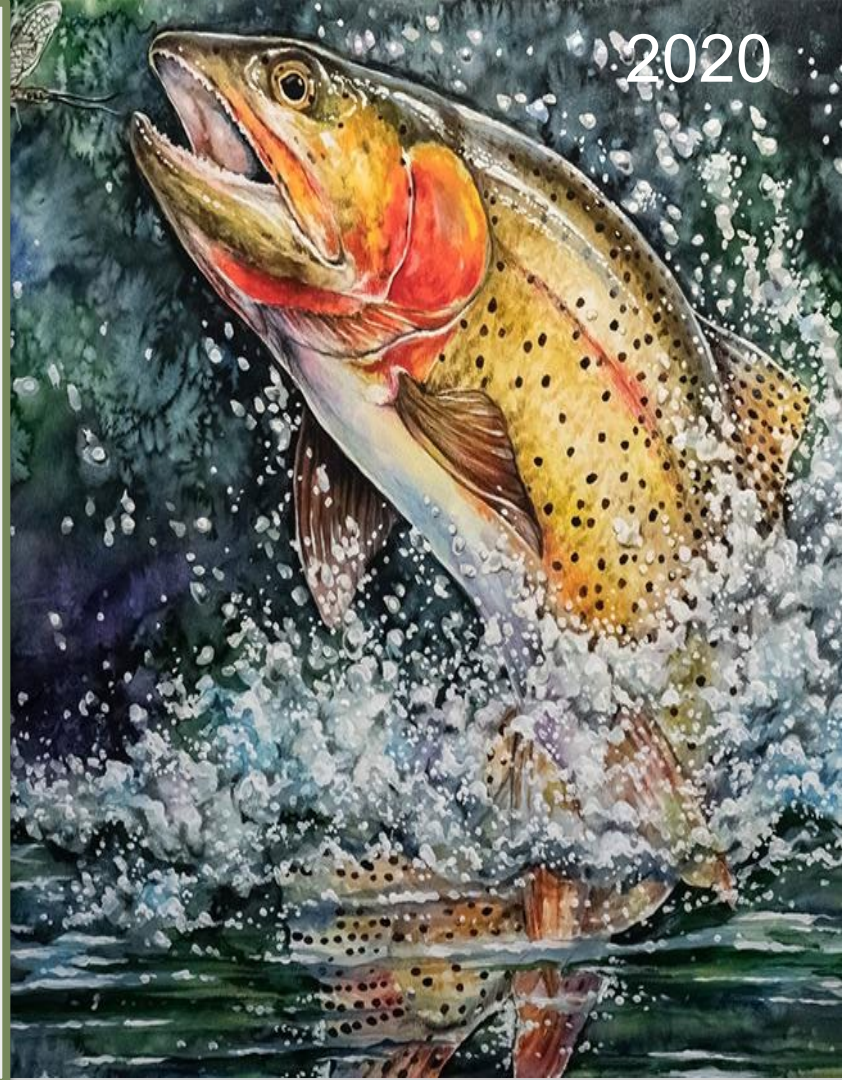
Feedback from Meetings

- Public Education
 - Messaging that does not cast trapping in a negative light or create fear.
 - WGFD webpage with information about trapping for both trappers and other recreationists (i.e. sharing the trails, releasing pets, benefits of trapping to the state and its wildlife).
- Tools
 - Not supported
- Workshops
 - Consider the content of the courses and use a trapper to teach the course along with WGFD.



Feedback from Meetings

- Conservation Stamp
 - Nearly 70% of trappers already have a conservation stamp through other licensing requirements or they thought they needed one.
 - Many other WHMA users (non license holders) don't currently contribute financially to WHMA management/maintenance (or other wildlife management) expenses in any way.



Feedback from Meetings

- Reporting for catch of non-target species
 - More support for voluntary reporting versus mandatory.
 - Useful for other programs such as Nongame.
 - Provide accurate information/data to determine if there is an issue or not with capturing non-target species.



Feedback from Meetings

- Snare check periods and equipment restrictions
 - Some users wanted no changes to equipment restrictions or check periods while other users wanted check periods to be reduced by at least some period and wanted to see some or all snare types restricted.
 - Most furbearer trappers check traps/snares more frequent than the current requirements of once a week or 72 hours.



Feedback from Meetings

- Furbearer Working Group
 - Consider WGFD personnel workload and duties of the group carefully.
 - Those publics who attended were very aware of budget constraints and high workload of current personnel.
 - A consistent/knowledgeable group related to these issues would be beneficial. Would demonstrate Department commitment and expertise.



Feedback from Meetings

- Setbacks
 - Many trappers are concerned about the definition of a trail. Many trails have little/no public use at certain times of the year and setbacks may not be necessary during those times. Compliance should not be hard to interpret or determine by the trapper.
 - Many users did agree on setbacks from campgrounds and developed areas (parking lots, boat docks, trailheads, picnic areas, etc.)
- Commission-owned land closures
 - There was support to consider these on a case by case basis.
 - Consider closing seasonally only (i.e., during pheasant seasons)



Unanimous Support (5)

Pet release workshops

Public education

Signage

Brochure

Conservation stamps

AFWA online course

Commission owned land closures

Trapper education

Furbearer working group

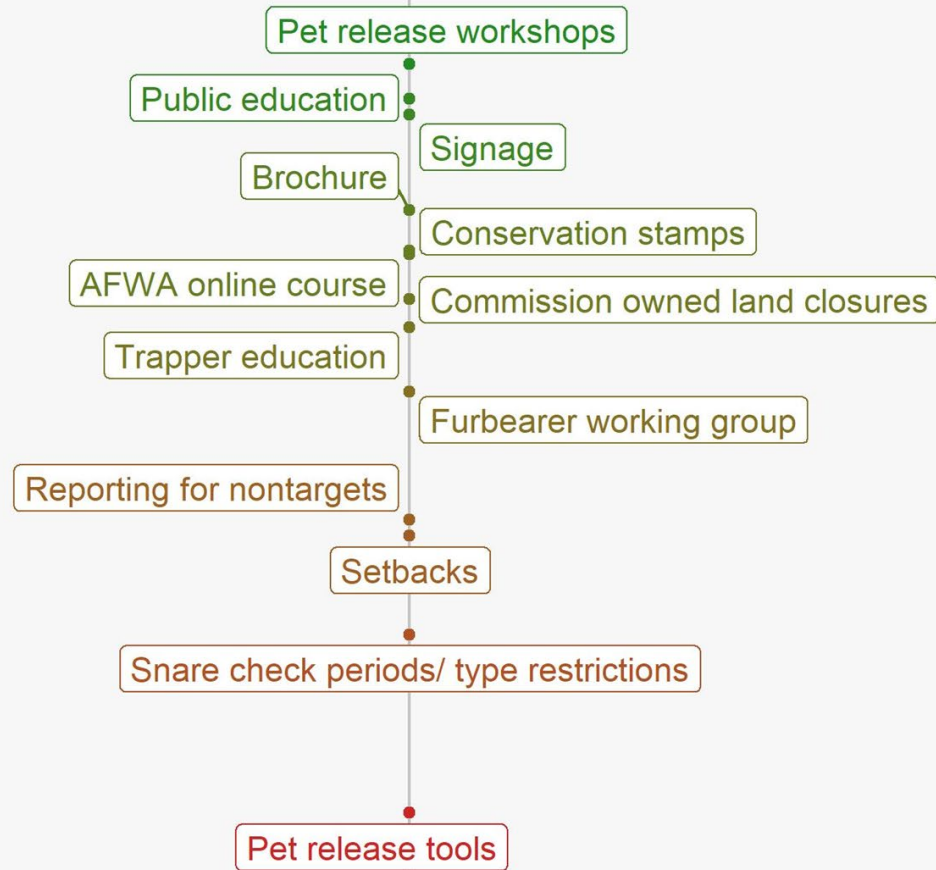
Reporting for nontargets

Setbacks

Snare check periods/ type restrictions

Pet release tools

No Support (0)



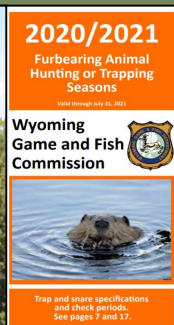
Recommendations to move forward

- Topics/potential actions to pursue
 - **Trapper Education** - Legislative then Regulatory action needed
 - Mandatory with exemptions, online to start
 - **Trapping Setbacks** - Legislative then Regulatory action needed
 - Setbacks from Campgrounds and Public Recreation Areas (boat ramps, picnic areas, etc.)
 - **Commission-owned land closures** - Regulatory action needed
 - **Prohibit large power snares through regulation**



Recommendations to move forward

- Topics/potential actions to pursue
 - **Pet Release Workshops**
 - **Trapping Webpage** -for trappers and other recreationists
 - **Signage** on WHMA's and trailheads - working with other land management agencies as well.
 - **Redesign the trapping brochure**
 - **Internal Furbearer Working Group**



Re-evaluate - further discussion necessary

- Topics/potential actions to re-evaluate
 - **Reporting of non-targets** - Voluntary reporting for trappers, landowners, and recreationists. Monitor.
 - **Snare check periods** - Include language in redesigned brochure to recommend shorter check periods as well as other best management practices for trappers.
 - **Other snare equipment restrictions** - Monitor and document snare equipment use and prevalence. Reevaluate with more information.



Not Recommended

- No further action needed
 - Tools at trailheads





Questions?